

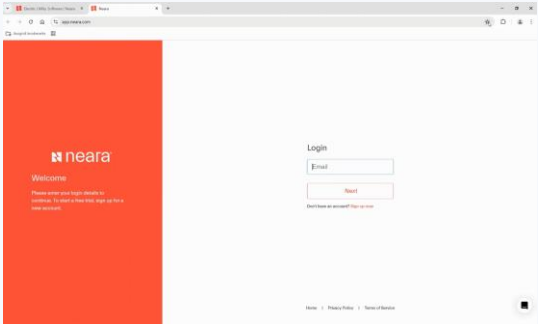
Open Neara



Neara is designed for use on Google Chrome. If Chrome is not installed on your computer, download and install Chrome. Setting Google Chrome as the default web browser will smooth the process for opening Nearer in the future.

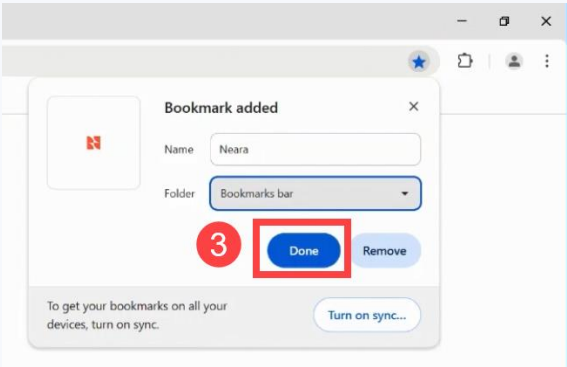
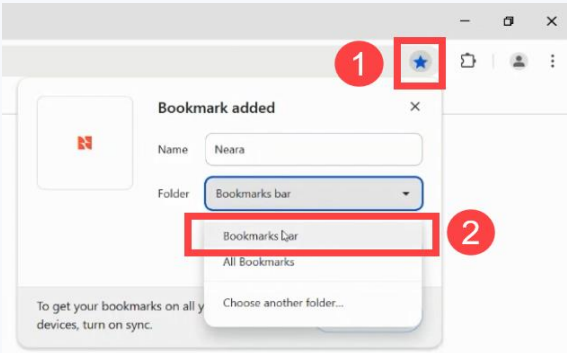


Designers will receive a registration email which will include instructions and a link to Neara. To open Neara go to <https://app.neara.com/powerapp?Ausgrid>. This will take you to the Neara log-in page.

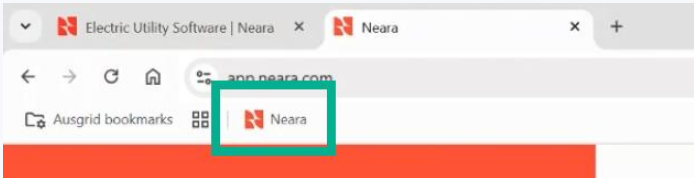


Save Neara as a Short-cut

- 1. Once logged into Neara, click on the star at the right-hand end of the address bar.
- 2. Select Bookmarks bar from the Folder drop-down options.
- 3. Click on the Done button.



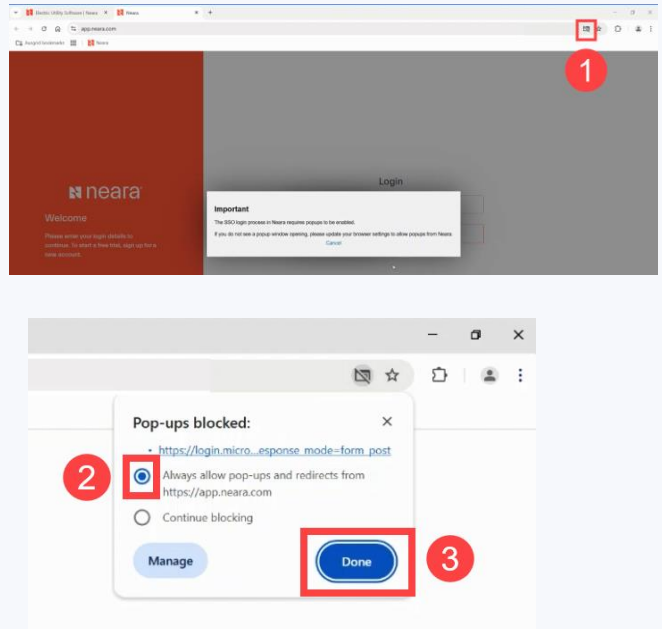
The Neara site is now saved as a shortcut on the Bookmarks bar.



## Allow Pop-ups

On your first log-in to Neara Chrome may ask you to enable pop-ups.

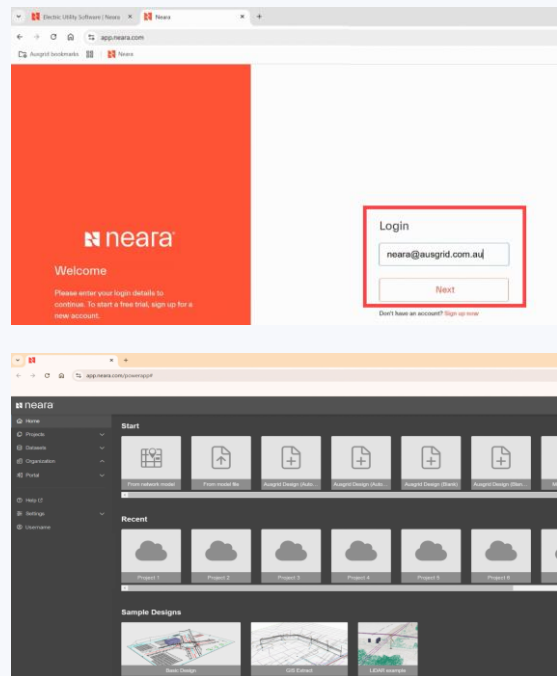
1. Click on the Pop-ups icon at the right-hand side of the address bar
2. Select the first option to allow all pop-ups.
3. Click on the Done button.



## Log-in with Single Sign On (SSO)

Neara uses SSO to login, therefore you will only need to enter your email address (no password required).

Enter your email address and click on the Next button.



Once logged in, you will land on the home screen.

The home screen is where you access your existing and recent Projects, Project templates, and options to create new Projects.

**If you experience any issues with logging in, please contact the Ausgrid support team via email: [neara@ausgrid.com.au](mailto:neara@ausgrid.com.au)**